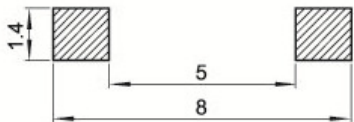
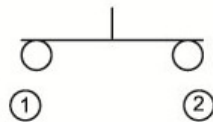
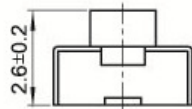
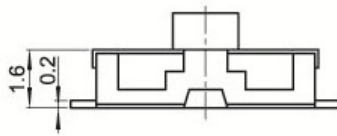
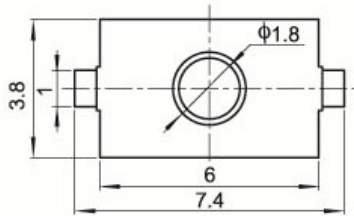


PART NUMBER: SMD-3560-12-NC

DESCRIPTION: 3.8X6.0X2.6mm NORMALLY CLOSED 3.5X6.0 SMD TACT SWITCH

ROHS COMPLIANT

NORMALLY CLOSED



SPECIFICATIONS

Items		Standard
Operating temperature range		-30°C to +85°C
Electrical performance	Rating	50mA. 12V DC
	Insulation resistance	100MΩ min. 100V DC
	Dielectric strength	250V AC for 1 min.
	Contact resistance	100mΩ max.
Durability	Lifetime	30,000 Cycles
Mechanical performance	Operating force	160gf 250gf
	Travel	0.25 ± 0.1mm

Dimensional tolerance +/- 0.2mm