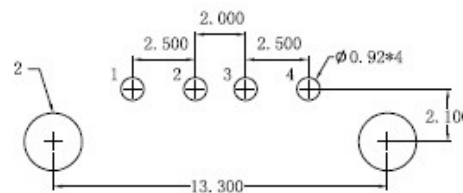
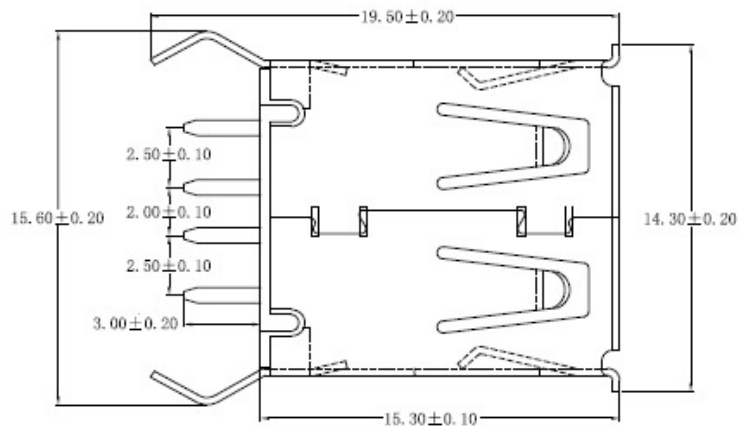
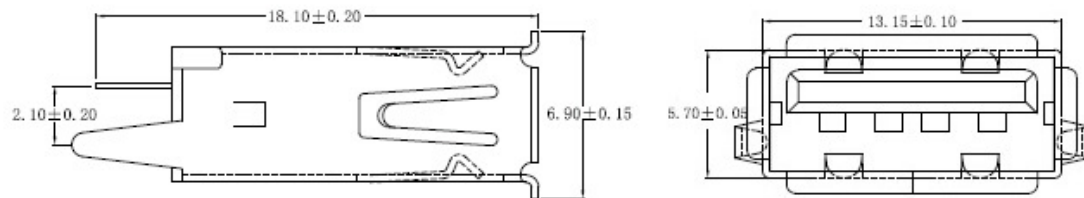
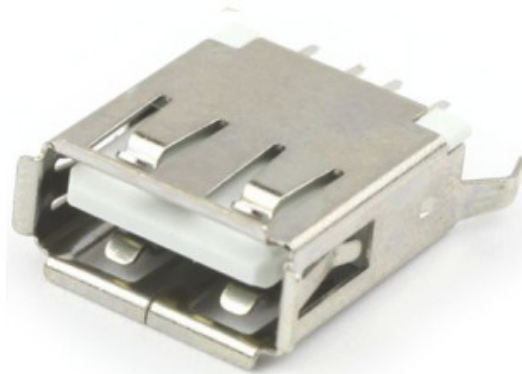


ROHS COMPLIANT



RECOMMENDED P.C.B HOLE LAYOUT

1.ELECTRICAL CHARACTERISTICS:

- 1-1.RATING: DC 30V 1.5A
- 1-2.CONTACT RESISTANCE: $\leq 30m\Omega$
- 1-3.INSULATION RESISTANCE: $\geq 1000M\Omega$ DC 500V
- 1-4.WITHSTANDING VOLTAGE: AC 500V 1min
- 1-5.LIFE: 5,000 CYCLES

2.MECHANICAL CHARACTERISTICS:

- 2-1.INSERTION FORCE: 35N Max
- EXTRACTION FORCE: 10N Min

3.Finish:

3-1.TERMINAL:

GOLD $< 1\mu$ PLATING ON CONTACT AREA
TIN $< 2-5\mu$ PLATING ON OTHER AREA
NICKEL $< 1-3\mu$ UNDERPLATING OVERALL


3-2.SHELL:

NICKEL $< 1-3\mu$ PLATING

PART NUMBER: USB-AF-20-017

DESCRIPTION: USB A 2.0 180 DEG. 15MM
WITH EDGE CURL

DIMENSION TOLERANCE +/- 0.2mm

 PRAN ELECTRONICS PVT. LTD.
INDIA.

REV. 0 DATE 28/04/2020