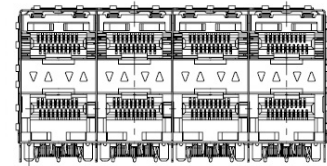
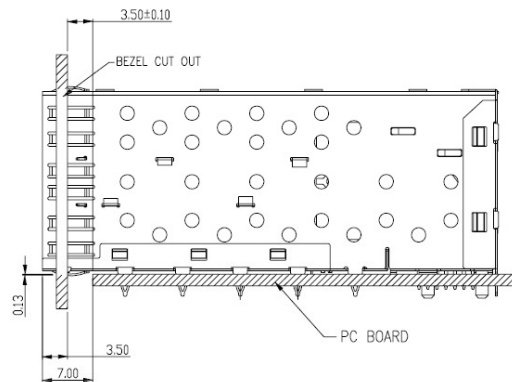
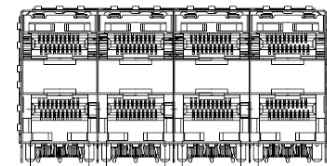


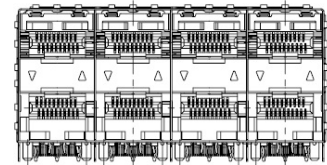
BEZEL CUT-OUT CENTER SPACING DETAIL
BEZEL THICKNESS:0.8-2.6



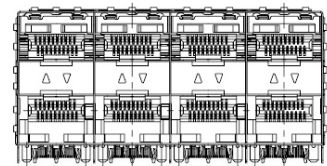
PART NUMBER SFP024L



PART NUMBER SFP024



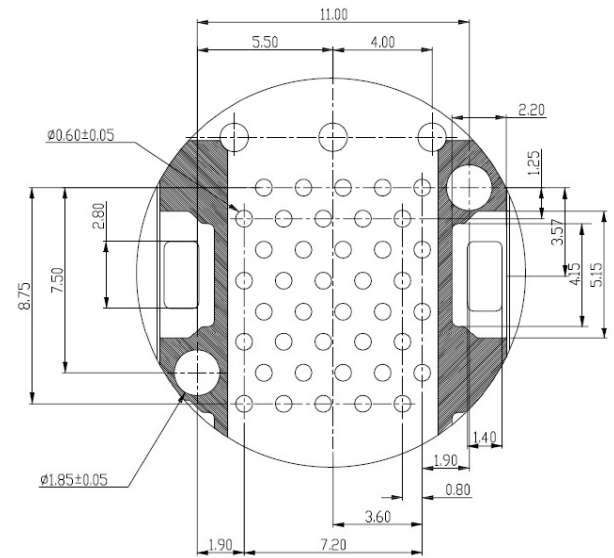
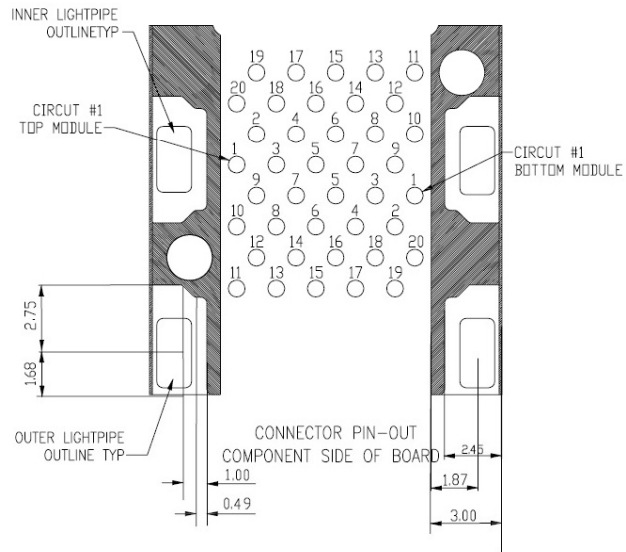
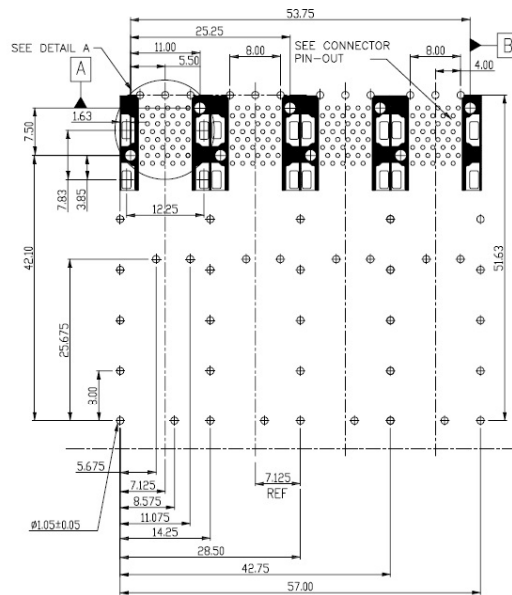
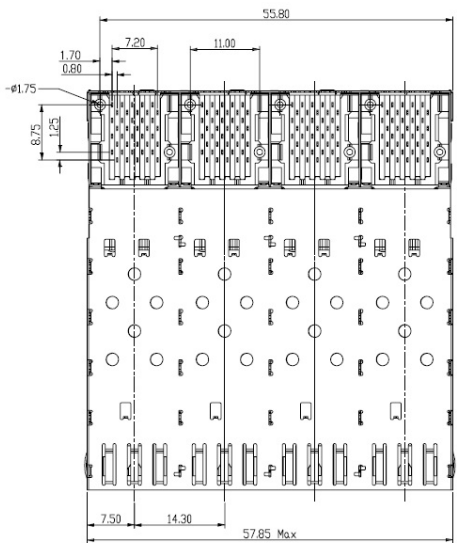
PART NUMBER SFP024L1



PART NUMBER SFP024L2

Contact: Copper alloy $t = 0.20\text{mm}$
Housing: High Temp. thermoplastic, glass filled UL94V0
Cage: Copper alloy $t=0.25\text{mm}$
Contact area plating gold 15u" min. over 50~80u" nickel
Durability: 100 cycles minimum
Insertion & extraction force: 40 N max. & 11.5N max.

1. Contact Resistance: 20 milli Ohms max. Initial
 2. Dielectric Voltage: 300 V AC for 1 minute
 3. Operating Temp.: -40 to 85 Deg. C
 4. Storage Temp.: -40 to 85 Deg. C
- RoHS Compliant



DETAIL A
SCALE 6:1