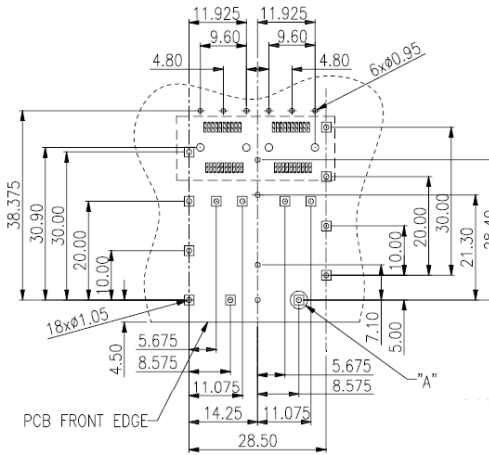


CONNECTOR LAYOUT



PCB LAYOUT THICKNESS=3.0mm (TOP VIEW)

Contact: Copper alloy $t = 0.20\text{mm}$
 Housing: High Temp. thermoplastic, glass filled UL94V0
 Cage: Copper alloy $t=0.25\text{mm}$
 Contact area plating gold $15\mu\text{m}$ min. over $50\sim 80\mu\text{m}$ nickel
 Durability: 100 cycles minimum
 Insertion & extraction force: 40 N max. & 11.5N max.

1. Contact Resistance: 20 milli Ohms max. Initial
2. Dielectric Voltage: 300 V AC for 1 minute
3. Operating Temp.: -40 to 85 Deg. C
4. Storage Temp.: -40 to 85 Deg. C

PART CODE: SFP 1x2
 Description SFP 1x2 CAGE

RoHS Compliant

REV 0 DATE 05/06/2020

PRAN ELECTRONICS PVT. LTD.